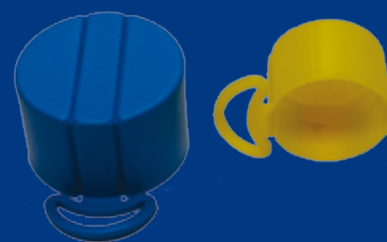
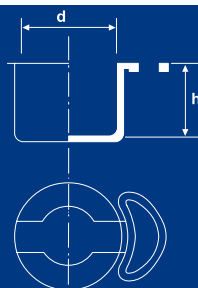


**COPERTURA CON LINGUETTA
A STRAPPO.**

Colore: Azzurro UNF, Giallo GAS/METRICI
Materiale: Polietilene (LDPE)



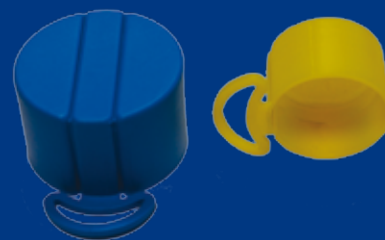
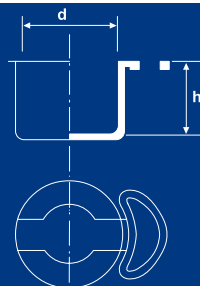
Codice	Filetti GAS/BSP	Dimensioni in mm.		Confez. standard
		d	h	
RAS1/4"	1/4" x 19	13	11	8'000
RAS3/8"	3/8" x 19	16	12	5'000
RAS1/2"	1/2" x 14	21.2	15	4'000
RAS5/8"	5/8" x 14	23	18.5	3'000
RAS3/4"	3/4" x 14	26.3	23.8	1'500
RAS7/8"	7/8" x 14	29.5	25	1'500
RAS1"	1" x 11	34	18	1'500

Codice	Filetti Metrici	Dimensioni in mm.		Confez. standard
		d	h	
RAS12	M12	12	12	5'000
RAS14	M14	14	14.1	5'000
RAS16	M16	16	16.5	5'000
RAS18	M18	18	18	4'000
RAS20	M20	20	20	2'000
RAS22	M22	22	22	2'000

Codice	Filetti UNF/JIC	Dimensioni in mm.		Confez. standard
		d	h	
RAS3/8"U	3/8" x 24	9.2	11.1	4'000
RAS7/16"U	7/16" x 20	11	11.7	5'000
RAS1/2"U	1/2" x 20	12.4	11.7	5'000
RAS9/16"U	9/16" x 18	14	12.1	5'000
RAS5/8"U	5/8" x 18	15.5	12.1	5'000
RAS11/16"U	11/16" x 16	17.1	12.1	5'000
RAS3/4"U	3/4" x 16	18.8	14.2	4'000

COPERTURA CON LINGUETTA A STRAPPO.

Colore: Azzurro UNF, Giallo GAS/METRICI
Materiale: Polietilene (LDPE)



Codice	Filetti UNF/JIC	Dimensioni in mm.		Confez. standard
		d	h	
RAS13/16"U	13/16" x 16	20.4	14.2	4'000
RAS7/8"U	7/8" x 14	22	16.5	2'000
RAS1"U	1" x 14	25	16.5	2'000
RAS1.1/16"U	1.1/16" x 12	26.7	19	2'000
RAS1.3/16"U	1.3/16" x 12	29.8	19	1'000
RAS1.5/16"U	1.5/16" x 12	33.1	19	1'000
RAS1.7/16"U	1.7/16" x 12	36.4	19	1'000
RAS1.11/16"U	1.11/16" x 12	42.4	21	800
RAS1.7/8"U	1.7/8" x 12	47.5	24.1	500
RAS2.1/2"U	2.1/2" x 12	63.3	30.5	2'500