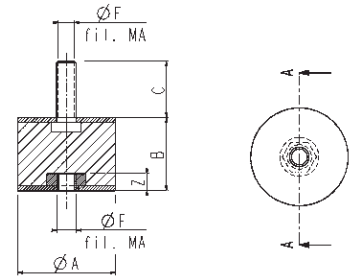
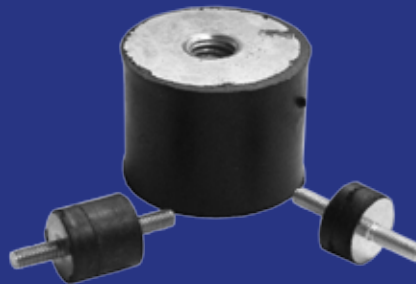
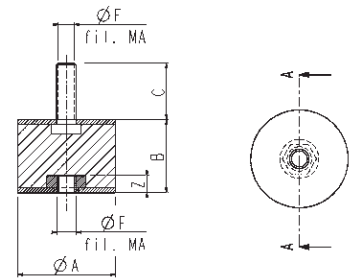
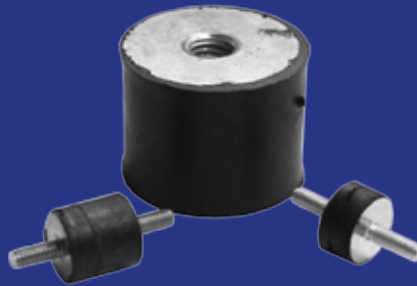


ANTI-VIBRATION DAMPERS


| Code | Ø A | Height B | screw C | series | filet F | max load (Kg) | bending load (Kg) |
|--------|-----|----------|---------|----------|---------|---------------|-------------------|
| AT0607 | 6 | 7 | 5 | MM | M3 | 1,5 | 0,3 |
| AT0911 | 9 | 11 | 10 | MM | M4 | 3 | 0,5 |
| AT1015 | 10 | 15 | 10 | MM/MF/FF | M5 | 15 | 2 |
| AT1508 | 15 | 8 | 10 | MM | M4 | 18 | 3 |
| AT1515 | 15 | 15 | 10 | MM/MF/FF | M4 | 20 | 4 |
| AT1515 | 15 | 15 | 10 | MM/MF/FF | M5 | 20 | 4 |
| AT1520 | 15 | 20 | 10 | MM/M/FF | M5 | 25 | 5 |
| AT1808 | 18 | 8 | 12 | MM | M6 | 25 | 5 |
| AT2010 | 20 | 10 | 12 | MM/MF | M6 | 45 | 5 |
| AT2015 | 20 | 15 | 12 | MM | M5 | 40 | 5 |
| AT2015 | 20 | 15 | 14 | MM/MF/FF | M | 50 | 5 |
| AT2020 | 20 | 20 | 14 | MM/MF/FF | M6 | 55 | 5 |
| AT2025 | 20 | 25 | 14 | MM/MF/FF | M5 | 30 | 4 |
| AT2025 | 20 | 25 | 14 | MM/MF/FF | M6 | 30 | 4 |
| AT2030 | 20 | 30 | 14 | MM/MF/FF | M6 | 30 | 4 |
| AT2515 | 25 | 15 | 14 | MM/MF/FF | M6 | 50 | 6 |
| AT2520 | 25 | 20 | 16 | MM/MF/FF | M6 | 60 | 6 |
| AT2520 | 25 | 20 | 18 | MM/MF/FF | M8 | 60 | 6 |
| AT2525 | 25 | 25 | 18 | MM/MF/FF | M6 | 40 | 4 |
| AT2530 | 25 | 30 | 18 | MM/MF/FF | M6 | 45 | 4 |
| AT3015 | 30 | 15 | 18 | MM/MF | M8 | 60 | 6 |
| AT3020 | 30 | 20 | 24 | MM/MF/FF | M8 | 80 | 8 |
| AT3025 | 30 | 25 | 23 | MM/MF/FF | M8 | 80 | 8 |
| AT3030 | 30 | 30 | 18 | MM/MF/FF | M6 | 80 | 8 |
| AT3030 | 30 | 30 | 23 | MM/MF/FF | M8 | 80 | 8 |
| AT3040 | 30 | 40 | 23 | MM/MF/FF | M8 | 70 | 7 |
| AT4020 | 40 | 20 | 23 | MM/MF/FF | M8 | 100 | 14 |
| AT4030 | 40 | 30 | 23 | MM/MF/FF | M8 | 120 | 16 |
| AT4030 | 40 | 30 | 23 | MM/MF/FF | M10 | 120 | 16 |
| AT4035 | 40 | 35 | 23 | MM/MF/FF | M8 | 130 | 17 |
| AT4035 | 40 | 35 | 23 | MF | M10 | 140 | 18 |
| AT4040 | 40 | 40 | 23 | MM/MF/FF | M8 | 140 | 18 |
| AT5020 | 50 | 20 | 23 | MM/MF/FF | M10 | 150 | 18 |
| AT5030 | 50 | 30 | 23 | MM/MF/FF | M10 | 160 | 20 |

ANTI-VIBRATION DAMPERS



| Code | $\varnothing A$ | Height B | screw C | series | filet F | max load (Kg) | bending load (Kg) |
|---------|-----------------|-------------|------------|----------|------------|------------------|----------------------|
| AT5040 | 50 | 40 | 23 | MM/MF/FF | M10 | 170 | 18 |
| AT5045 | 50 | 45 | 23 | MM/MF/FF | M10 | 160 | 17 |
| AT5050 | 50 | 50 | 23 | MM/MF/FF | M10 | 150 | 14 |
| AT6030 | 60 | 30 | 32 | MM/MF/FF | M12 | 250 | 40 |
| AT6035 | 60 | 35 | 32 | MM/MF/FF | M12 | 250 | 35 |
| AT6040 | 60 | 40 | 32 | MM/MF/FF | M12 | 240 | 35 |
| A6045T | 60 | 45 | 32 | MM/MF/FF | M12 | 230 | 30 |
| AT6050 | 60 | 50 | 32 | MM/MF/FF | M12 | 230 | 25 |
| AT6055 | 60 | 55 | 32 | MM/MF/FF | M12 | 200 | 25 |
| AT6060 | 60 | 60 | 32 | MM/MF/FF | M12 | 200 | 20 |
| AT7525 | 75 | 25 | 47 | MM/MF/FF | M12 | 500 | 90 |
| AT7530 | 75 | 30 | 47 | MM/MF/FF | M12 | 500 | 80 |
| AT7535 | 75 | 35 | 47 | MM/MF/FF | M12 | 480 | 70 |
| AT7540 | 75 | 40 | 47 | MM/MF/FF | M12 | 480 | 60 |
| AT7550 | 75 | 50 | 47 | MM/MF/FF | M12 | 480 | 55 |
| AT7555 | 75 | 55 | 47 | MM/MF/FF | M12 | 450 | 45 |
| AT7560 | 75 | 60 | 47 | MM/MF/FF | M12 | 450 | 35 |
| AT10040 | 100 | 40 | 47 | MM/MF/FF | M16 | 900 | 110 |
| AT10050 | 100 | 50 | 47 | MM/MF/FF | M16 | 850 | 100 |
| AT10055 | 100 | 55 | 47 | MM/MF/FF | M16 | 850 | 100 |
| AT10060 | 100 | 60 | 47 | MM/MF/FF | M16 | 800 | 90 |